

DIRECTIONS TO ROCK HOUNDING
CGMS Presentation – Dave Schaufler

1. **PONCHA PASS AGATES** – Starting from Poncha Springs, drive South 8 miles (over Poncha Pass) Hwy 285 to CR XX50 (Bonanza OHV staging area). Drive 1/2 mile and park on the side of the road. **Easy**
2. **ARAGONITE** – Start from across the Salida Hospital, CR175 (Ute Trail), drive 6.4 miles to the Beasway MTB trailhead parking area. Walk across the road up the hill approximately 50-75 yards. **Easy**
3. **ACTINOLITE** - Start from across the Salida Hospital, CR175 (Ute Trail), drive 7.5 miles, turn left on to CR184. Drive 1.4 miles to CR185, then another 1/4 mile to the mine quarry filled with water. Park, walk across the road for 25 feet to the side of the hill. **Easy**
4. **BARITE** – This is a fee to dig site. From Johnson Village, drive 25 1/2 miles on Hwy 24 to Hartsel, CO and stop at the Bayou Salado Trading Post. From there, drive back West on 24 Hwy for 1.3 miles, go through the gate at the road, which will be on your left. Drive 1.4 miles to the Barite mine. (There is a BLM gate you have to go through before getting to the mine area. **Easy**
5. **MAGNETITE RIDGE/AMETHYST** - From Johnson Village, drive on Hwy 24 for 45 miles, turn left on CR31. Drive 6.8 miles, turn left on to CR233. Drive for 2/3 mile and park on the side of the road. Walk across the road up the hill for approximately +/- 100 yards to Magnetite Ridge. For Amethyst, go back to the intersection of CR233 and CR31, turn left towards Tarryall, drive 1/4 mile. **Easy**
6. **TROUT CREEK CHERT QUARRY** – Starting from Johnson Village drive on Hwy 24 for 5.8 miles, turn right on CR307 for 1.5 miles. Turn right on CR187, drive for one mile, turn right on CR300 follow the jeep road for 1.4 miles. You'll come to a large intersection, stay to your left and park in the parking area next to a log fence. There is a kiosk sign with historical information. Walk the trail for 1/3 mile to the quarry. **Easy**
7. **LAST LOST CHANCE MINE** / Silver, Sowbelly Agate, Amethyst - near Creed, CO. From Buena Vista, drive South on Hwy 285 for 87.5 miles, turn right on CO 112 to Del Norte, CO. Turn right on CO 160 West, drive 15.9 miles until you reach South Fork, CO. Turn right on CO 149 North. Drive 27.2 miles into Creed. Turn on 7th street and follow around staying on CO 149 (S. Main). After .3 miles turn right on CR504 (Bachelor Road). Follow the road up the mountain for 4.9 miles, then make a sharp right onto the Last Chance Mine road. Pay for only what you take. Mine tour too. Price per pound. **Easy**
8. **IRON PYRITE in matrix** – From Buena Vista, drive North towards Leadville for 30 miles, turn left on to CR300. Drive .4 miles to CR5A, turn right. Drive for 1.9 miles to CR4, turn left (go over Turquoise Lake dam), drive 4.2 miles, stay to your right onto CR9 (Turquoise Lake road). Drive 1.7 miles, turn right towards Mayqueen Campground. Park in the CG parking lot. There is a parking fee. Hike on the trail on the North side of the lake for 1.3 miles, go off the trail, up the hill for approximately 75-100 yards. **Easy to moderate.**

9. **MONARCH PASS/CT AGATES** - Starting from Poncha Springs, drive South on Hwy 285 for 5 miles. Turn right at Mears Junction, CR200 (Marshall Pass Road) and drive for 13.7 miles until you reach the Marshall Pass. Drive pass the bathrooms and kiosks and drive up a small incline road and park on the top. From there you will start on the Colorado Trail/CDT heading South for 1.7 miles. Start to look for agates on top of the ground. **Moderate**
10. **Italian Mountain / Vesuvianite** – Start from Buena Vista, drive on CR306 towards Cottonwood Pass, for 32.5 miles. Turn right on to CR742, drive 9.5 miles, turn left on to CR759 for 6.4 miles, curve to your right and go for another .68 miles, turn left towards “Oliver’s cabin” (stop read a little about the history of the miner’s cabin). From Oliver’s cabin, drive 2.5 miles to an old tailings pile where the Italian Mountain TH starts. You can park/camp there. Follow the trail up to the top of Italian Mountain, maybe 2 miles? **Very difficult.**
11. **Lower Brown’s Lake / Primarily Smoky Quartz crystals** – From Buena Vista drive South on Hwy 285 for 11 miles, turn right on CR270. Drive 1.5 miles, stay straight on to a dirt road, CR 272. From the intersection of CR270/272, drive 2 miles and turn left, still on CR272 for another 1.6 miles to the Brown Falls TH. Hike up the trail going pass the falls to you reach the Lower Brown’s Lake. Camp at the dam area. Plenty of camping area. From the point of the dam, look North town the South side of Mt. White. Hike up the ravine above tree line. You must bush wacke through a large grove of Aspen trees. **Most difficult.**

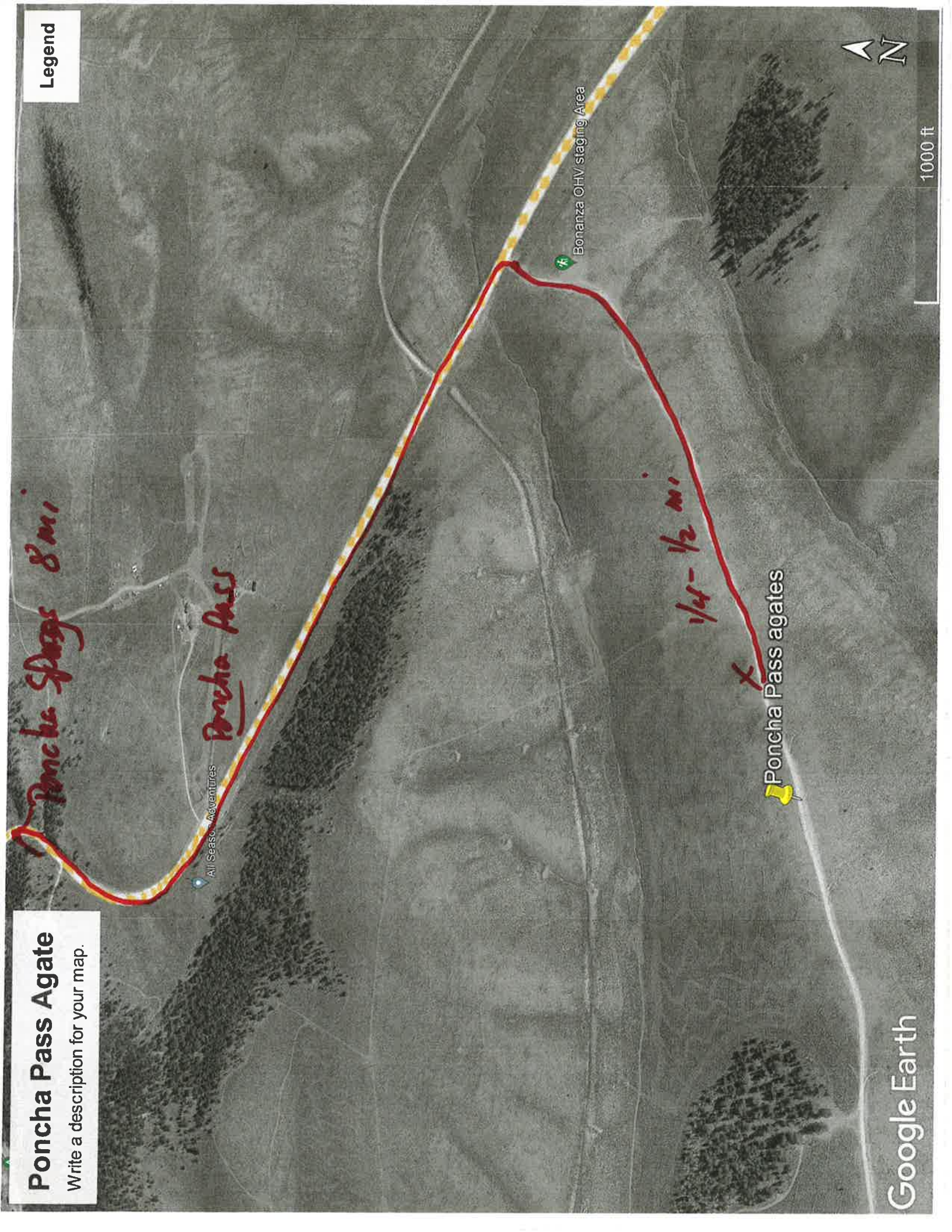
OUT OF STATE ROCK HOUNDING -

1. **GARNET HILL / BLM RECREATION AREA, Ely, NV** – Public digging area for garnets. Drive to Ely, NV. About 10 hour drive from BV. From Ely drive West for 6.2 miles, turn right on Pole Line road. Drive 1.6 miles, turn right. Drive for 1.4 miles to parking area. There is a pit toilet, picnic table and fire ring. You can camp there too. No fee area. Great for kids. **Easy**
2. **TOPAZ DOME QUARRY** – Pay to dig on topaz claim. You may hunt for topaz on the public side too. Claim is well marked. Camping is permissible on the public land adjacent to the claim. <https://topazmountainadventures.com/>. Drive to Delta, UT. About 7 ½ hour drive. From Delta, drive North on US 6 for 10.3 miles, turn left on UT-174 S/Brush Wellman Rd/Brush Beryllium Rd for 48.3 miles. Take Brush Wellman Rd and Brush Beryllium Rd to Topaz Rd. Turn right on Topaz Road for 3.7 miles and follow road up to Topaz Valley – Topaz Dome Quarry. **Easy**
3. **OBSIDIAN – GLASS BUTTE**, Central Oregon. Located between Burns and Bend, Oregon.
4. **SUNSTONE PUBLIC COLLECTION AREA**, near Plush, Oregon

Poncha Pass Agate

Write a description for your map.

Legend



Aragonite

Write a description for your map.

Legend

 Agates Aragonite

 Marshall Pass Trailhead

Google Earth

Image © 2024 Airbus

1000 ft



Aragonite

181

175

182

183

184

183

x Park

River
Solid
6 1/2 mi

Actinolite

Write a description for your map.

Legend

Google Earth

Image © 2024 Airbus



1000 ft

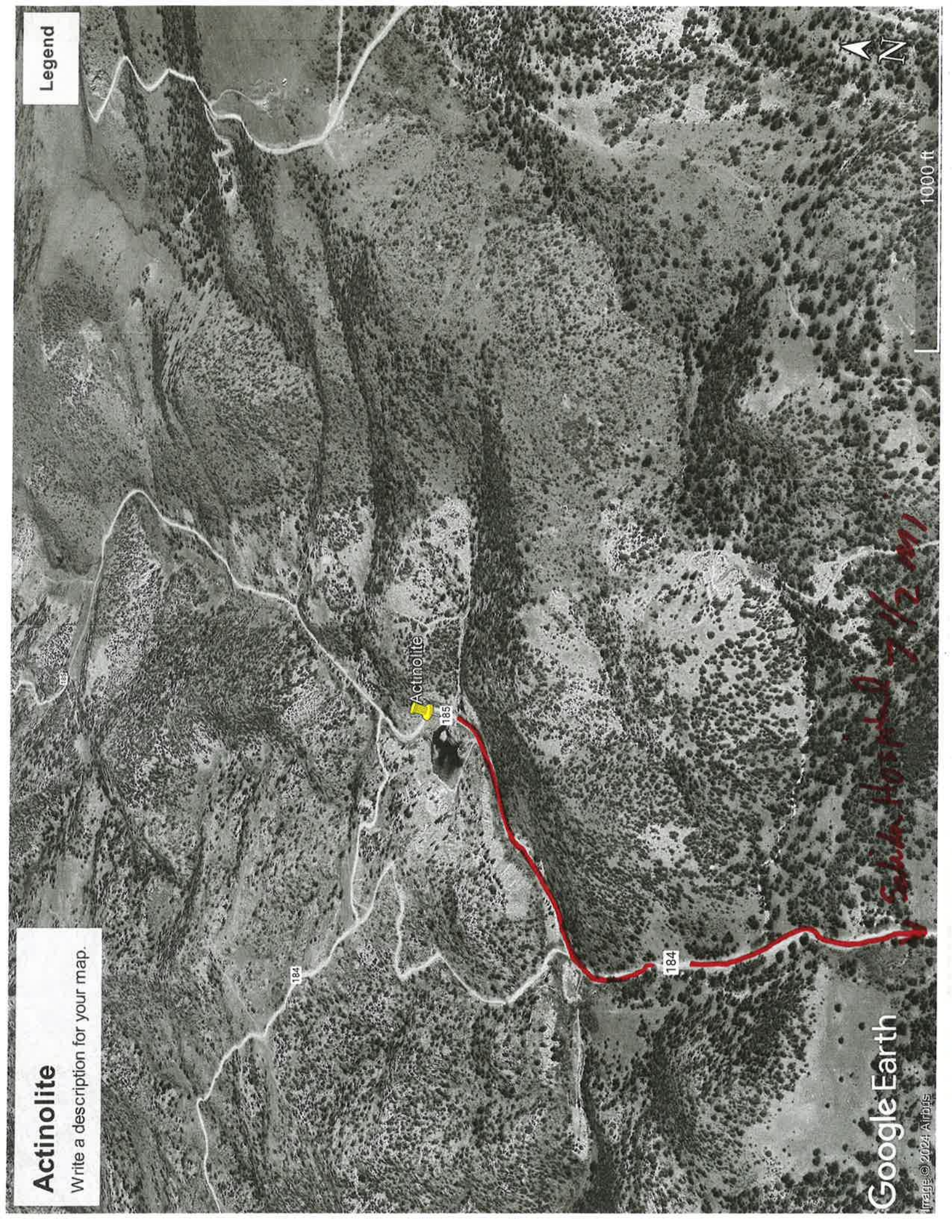
Salida Hospital 7 1/2 mi

Actinolite

185

184

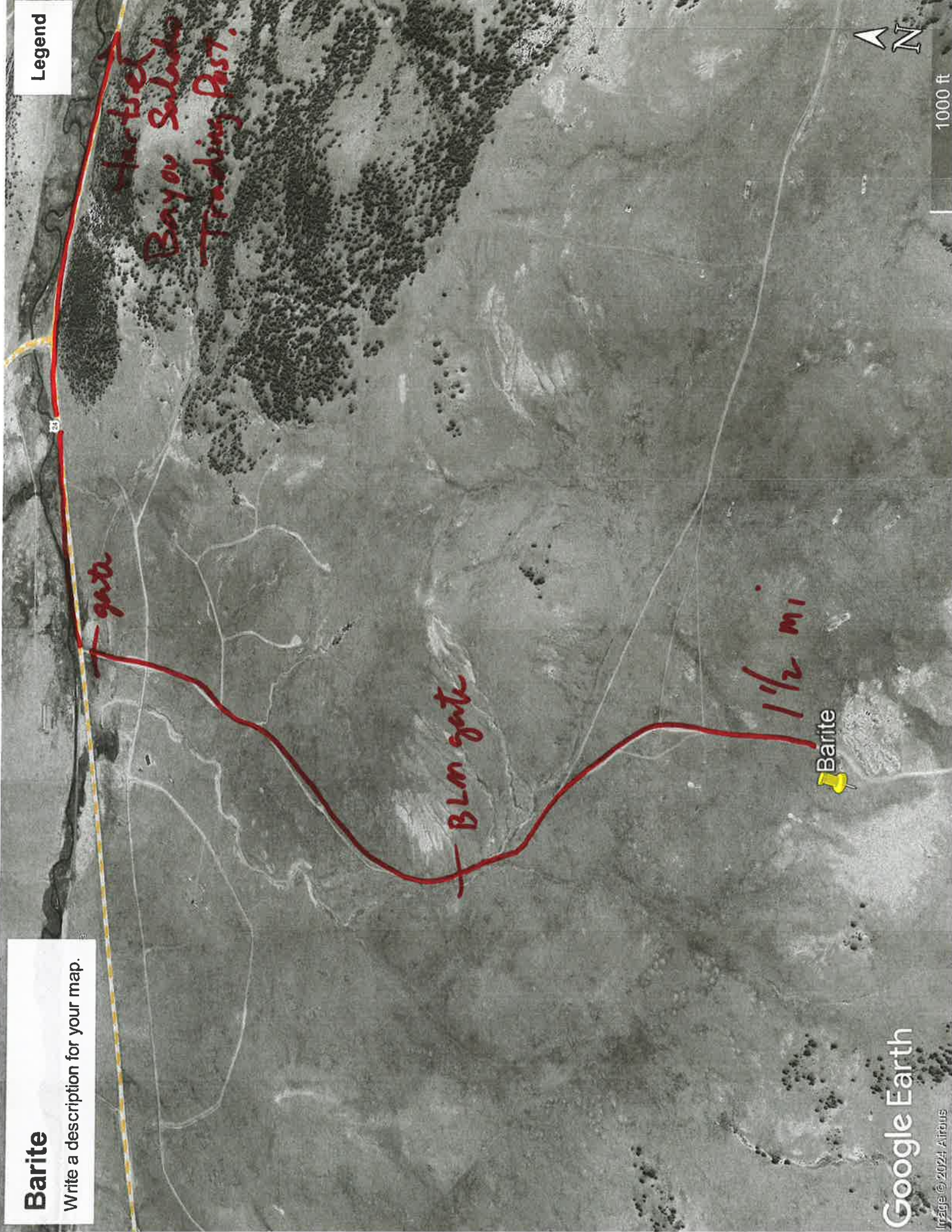
184



Barite

Write a description for your map.

Legend



Magnetite & Amethyst

Legend

39.121133,-105.493461

233

Magnetite Ridge

Amethyst

31

Badger Flats Vicinity OHV Trails...

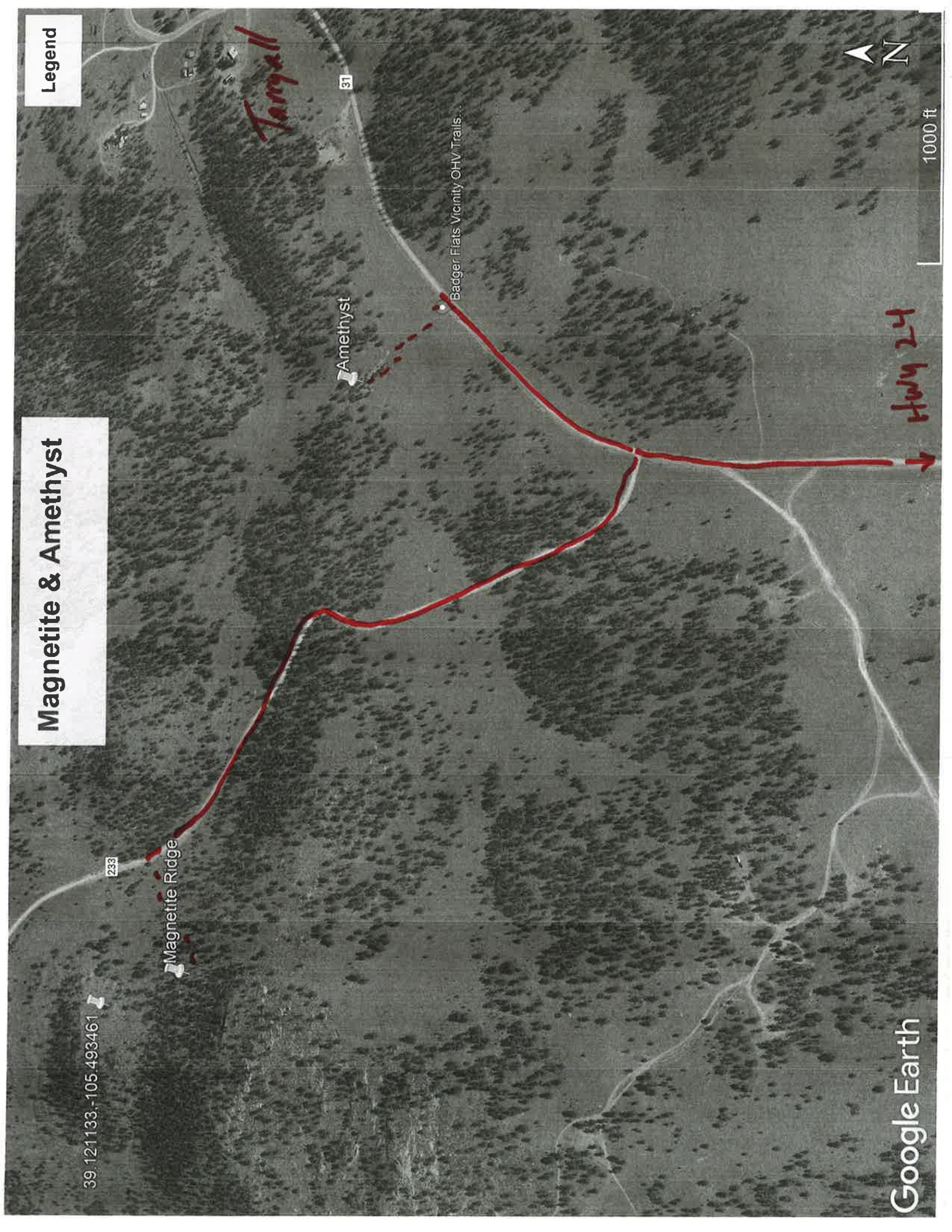
Google Earth

1000 ft

July 24

N

Tammy



Topaz Dome Quarry - Topaz

Legend

Topaz Dome Quarry

Weiss Hwy

Brosn Hwy

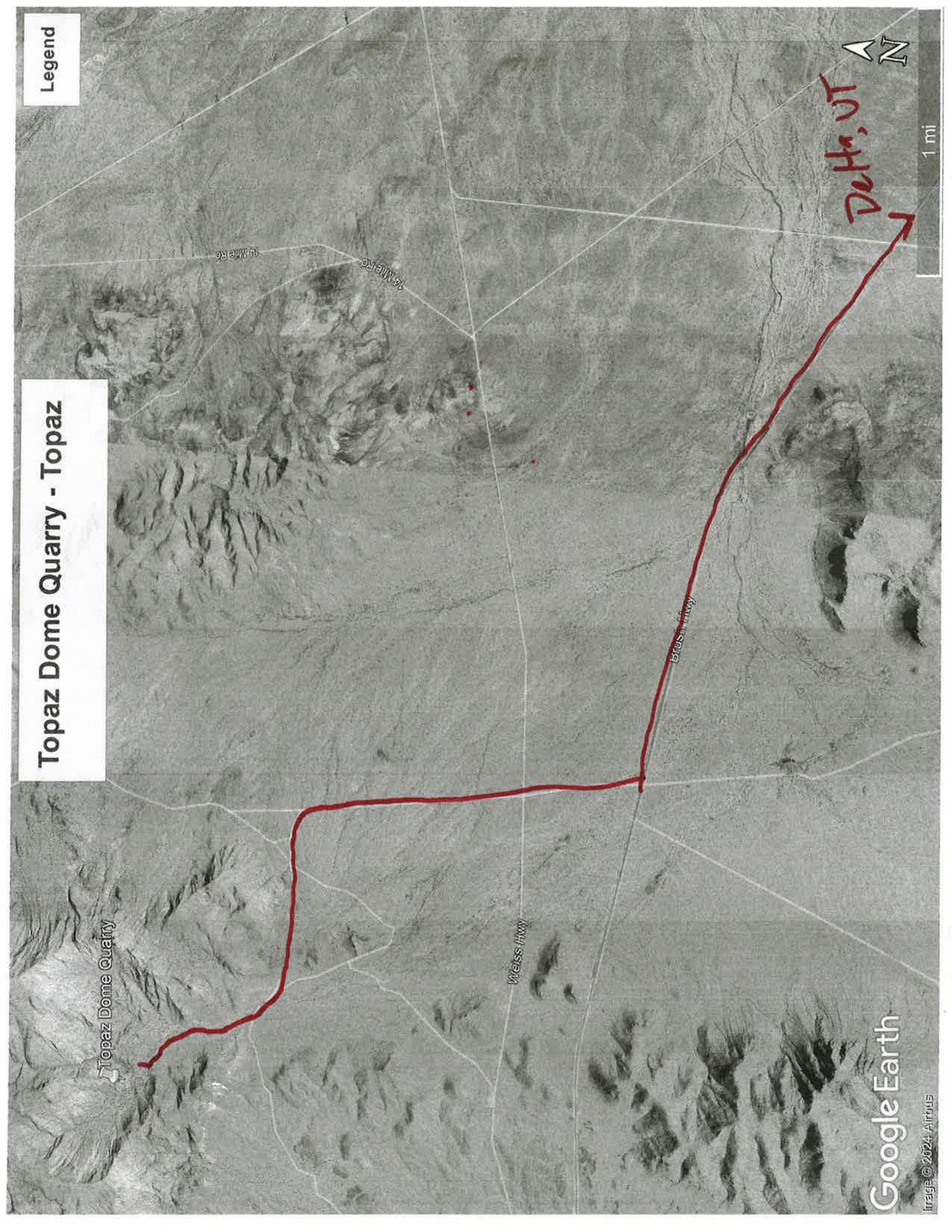
Delta, UT

Google Earth

Image © 2024 Airbus

1 mi

N



Topaz Dome Quarry

Topaz Dome Quarry - Topaz

Legend

Google Earth

Image © 2024 Airbus

Image Landsat / Copernicus



10 mi

Delta

50

50

Hinckley

50

Sutherland

Abraham

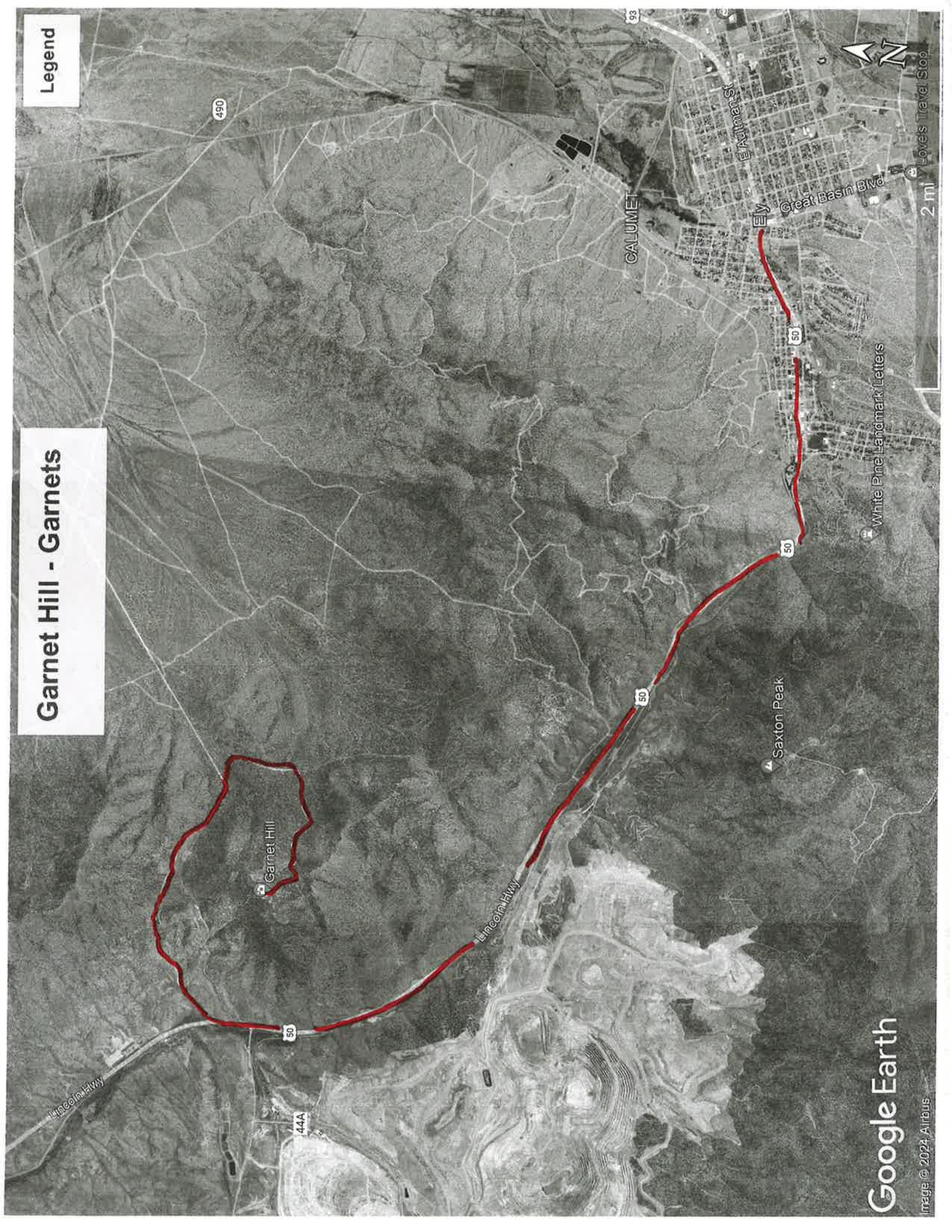
Sugarville

174

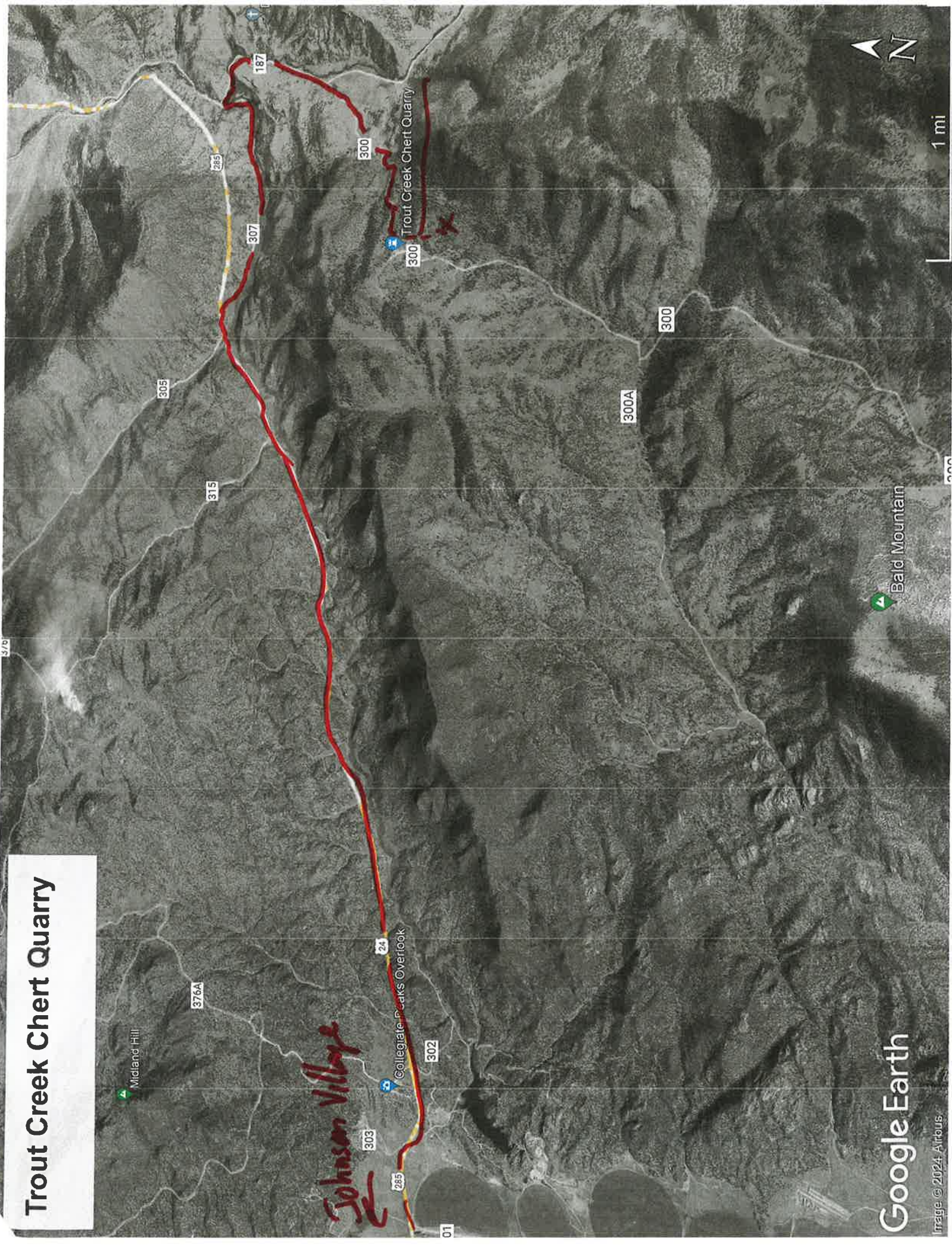
6

Legend

Garnet Hill - Garnets

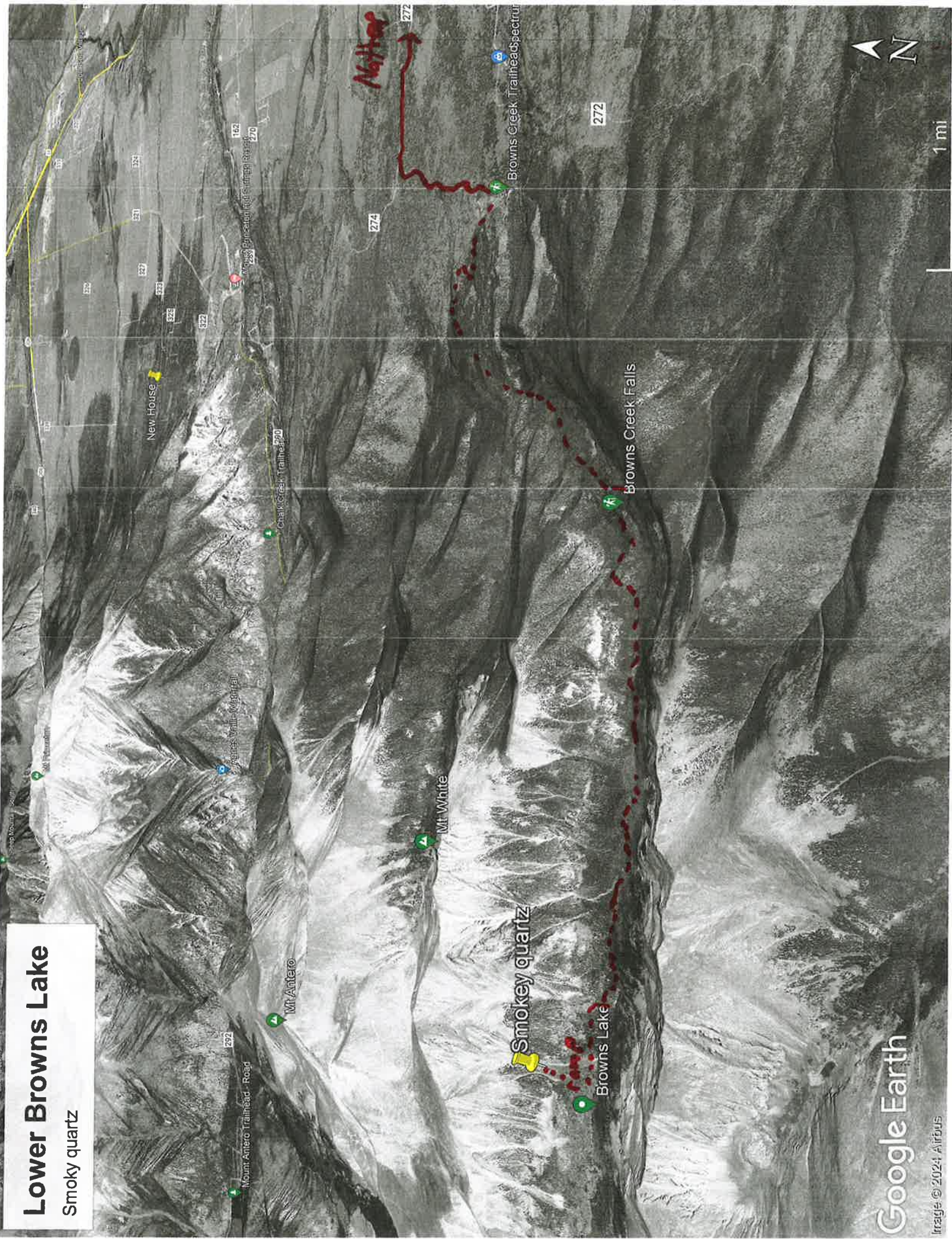


Trout Creek Chert Quarry



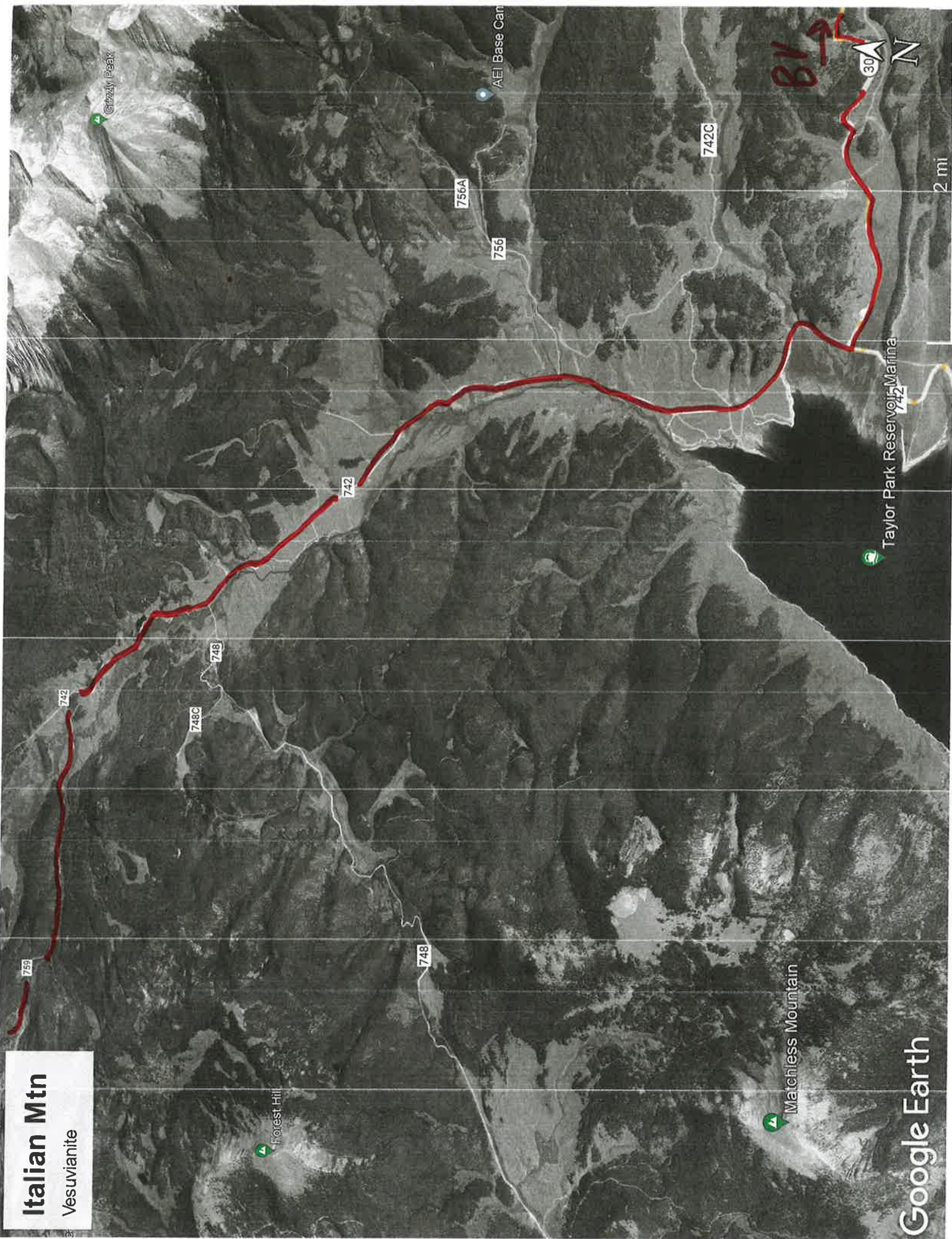
Lower Browns Lake

Smoky quartz



Italian Mtn

Vesuvianite



Italian Mtn

Vesuvianite

Italian Mountain

Oliver's Cabin

759

park/camp T.H. to Italian Mtn.

Google Earth

2000 ft



Agates

Write a description for your map.

Legend

- Agates
- Marshall Pass Trailhead



Google Earth

Image © 2024 Airbus

Iron Pyrite

Write a description for your map.

Legend



Uncle Butte Hut

Imberke Lake Trailhead



Shimmering Point Hike



Mayqueen Campground



Iron Pyrite in matrix

9

4

Google Earth

Image © 2024 Airbus

2000 ft



Last Chance Mine - Creede, CO

Silver, Sowlbelly Agate, Amethyst, and much more.

